

CCA-BC200

Rear View Backup Camera System



Provide additional protection from potential hazards when backing up. SANYO's Rear View Backup Camera System offers numerous features which provide precise views so you can back up safely with confidence.

- ✦ Can be used with any vehicle profile
- ✦ Digitally corrects images for precise and natural views
- ✦ Exclusive SANYO AirCam™ technology



CCA-BC200



Rear View Backup Camera System



Rear View Back Up Camera System



Provide additional protection from potential hazards when backing up. SANYO's Rear View Backup Camera System offers numerous features which provide precise views so you can back up safely with confidence.

ENHANCED & AIRCAM™ IMAGES	FLEXIBLE MOUNTING OPTIONS	OFF CENTER IMAGE ADJUSTMENT
<p>ORIGINAL VIEW</p> <p>DIGITALLY CORRECTED VIEW</p>	<p>Virtual Camera</p> <p>Camera</p> <p>AIRCAM™</p>	<p>Camera</p>
<p>SANYO's backup camera system offers the most natural perspective & view by digitally correcting distorted images typical of wide angle view cameras. There's no need to interpret distorted "fish-eye" or wide angle images. SANYO's backup camera even offers AirCam™, giving you more accurate and precise views for tight spots and difficult maneuvers.</p>	<p>Once mounted on your vehicle, SANYO's backup camera system allows you to set the camera's viewing angle. Whether low on a bumper or up high toward the roof, SANYO's camera system will be able to provide clear and precise views of the area behind your vehicle.</p>	<p>See a centered image of the area behind your vehicle regardless if the camera is mounted to the left, center, or right side.</p>

SANYO's Rear View Backup Camera System works with any vehicle. It's perfect for use with...

- Trucks & Sport Utility Vehicles
- Family Car
- High Profile Vehicles
- Vehicles with Towing Capabilities
- RV's & Campers
- Commercial Vehicles

SANYO's Rear View Backup Camera can be used with your car video monitor system and connects through RCA video input.

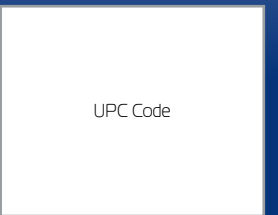
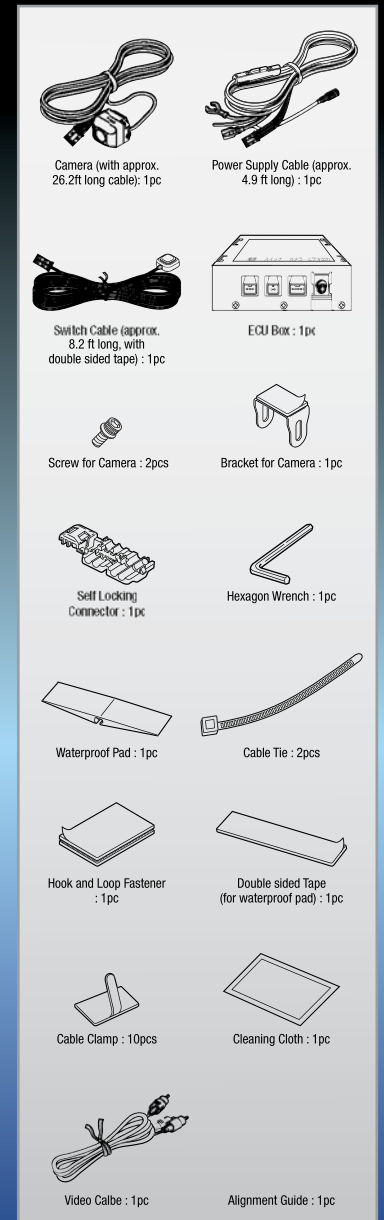
TECHNICAL SPECIFICATIONS			
Viewing System	Mirror Image (for back up)	Output Signal	1 Vp-p (75 ohm NTSC), RCA Type Socket
Power Supply	DC12V	Operation Temperature	-4° F ~ +140° F
Max. Consumption Ampare	Approx. 300mA	Storage Temperature	-22° F ~ +176° F
Imaging Device	Color CCD. 1/4"	Camera Dimensions	W1.1" x H0.9" x D1.0"
Number of Pixels	Total: 270K pixels Effective: Approx. 250K	ECU Dimensions	W3.4" x H1.1" x D2.6"
Viewing Angle	Horizontal: Approx. 135 degree Vertical: Approx. 105 degree	Camera Weight	Approx. 0.35lbs (including cable)
Min. Required Illuminance	Approx. 1.6 lux.	ECU Weight	Approx. 0.37lbs

Monitor not included

©2007 SANYO Fisher Company. All rights reserved. Trademarks and logos are copyrights of their respective owners. Screen images are simulated and do not represent actual picture quality. Monitor sold separately.



CONTENTS



Camera Unit: Made in Japan
Control Box: Made in Malaysia
Accessories: Made in China